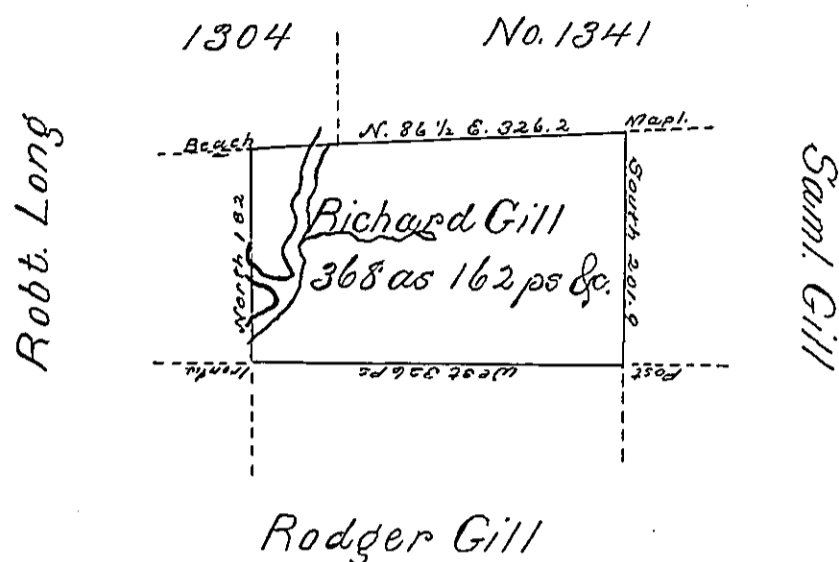


Donation Land



Situate on the west side of French Creek in Allegheny County containing 368 as. 162 ps and Allowance of six p Cent for Roads &c. Surveyed the 21st. day of October 1795 In pursuance of a warrant dated the 10th. day of April 1793.

Wm. Power Dy Sr.

To Daniel Brodhead Esqr.
Surveyor General

IN TESTIMONY that the above is a copy of the original remaining on file in the Department of Internal Affairs of Pennsylvania, made conformably to an Act of Assembly approved the 16th day of February, 1833, I have hereunto set my Hand and caused the Seal of said Department to be affixed at Harrisburg, this third day of October 1899

James W. Patton
Secretary of Internal Affairs.